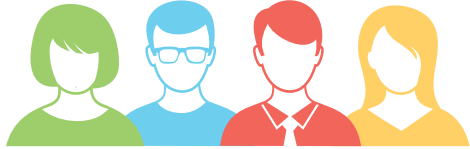


WHAT IS A CHAPLAINCY SERVICE?

A Chaplaincy Service is provided by a Pastoral Care Worker (PCW) in a school community on behalf of the local combined Christian community to provide additional support as needed.



Pastoral Care Workers

- Provide pastoral care in a 'first response' capacity to critical incidents, refer to specialist support and to provide ongoing presence and followup
- Work closely and in partnership with leadership and other wellbeing staff in schools to provide pastoral care and practical support to students, families and staff as requested
- Are well positioned to work across the whole school to 'build a sense of' community, harmony and cohesion
- Are trained and equipped to provide their school with a unique dimension of social, emotional and spiritual support in line with the DECD wellbeing framework

Partnerships

Your local school and your local church work together to provide your Pastoral Care Worker.



WHY A CHAPLAINCY SERVICE?

The Facts

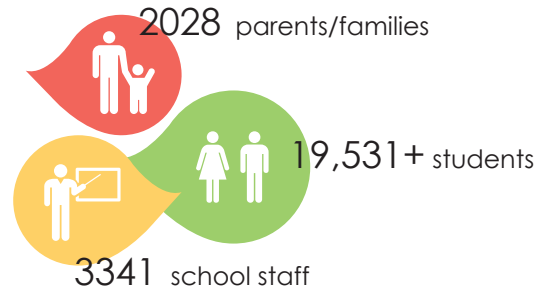
Students today face a more complex and challenging environment than ever before.

- 15% of young Australians are currently experiencing an anxiety condition
- Bullying is the leading social issue among SA students
- Just under half of all divorces occur among couples with children under 18
- 15% of SA students miss out on breakfast

source: ABS Statistics collected 2007, 2013

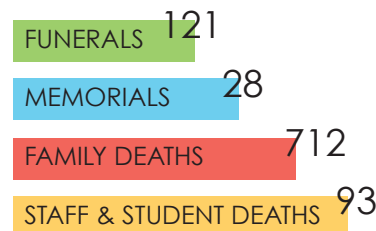
Support in SA Schools:

Outcomes from a 2014 Survey



Figures based on results from 20 day survey

Grief & Loss



Figures based on 5 monthly overview / *PCW's address the top two social issues expressed by students in the 2013 ABS Census of School

Other Activities

Mentoring
Healthy Eating*
Support for Parents
Suicide Prevention
Anti-Bullying*



Cut off and keep for reference

PASTORAL CARE WORKER: SIMON UPPILL



Hi! I am Simon Uppill and I have worked as Pastoral Care Worker at Christies Beach Primary School since 2014.

I have studied Youth Work & Social Development and

I have had the opportunity to work with young refugees and people experiencing mental illness, addiction and homelessness. I have also worked alongside young people in prisons.

I enjoy spending time with my wife and two foster children, playing cricket, watching AFL (Go Geelong!), and playing board games with friends.

I'm really looking forward to continuing to contribute to the Christies Beach Primary School community in 2017.

My regular days at school are:

Tuesdays and Wednesdays

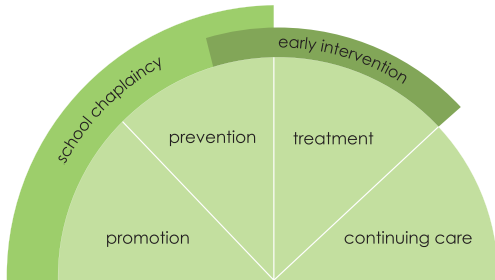
Contact Details

phone: 8382 1511

email: simon.uppill507@schools.sa.edu.au

CHAPLAINCY & WELLBEING

Chaplaincy Services promote student wellbeing, engaging young people in activities that are preventative and which support early intervention and referral of mental health issues.



PRINCIPALS ARE SAYING...

The benefits of the program are clear and include; increased attendance at school by identified students, social and emotional support, increased access to social skills programs and families feeling supported in time of crisis such as suicide, death and family separations.

Primary School Principal

A lot of student problems never eventuate because Trev has provided support and encouragement early on. The students always walk away from their time with Trev with more bounce in their step....It is hard to imagine our school without thinking of our Worker.

High School Principal



Supporting School Communities
Across South Australia Since 1991

Schools Ministry Group (SMG) coordinate and facilitate Chaplaincy Services in government schools across South Australia.

- School Chaplaincy commenced in SA Government schools in 1986.
- SMG partners with schools, local churches, state and federal governments to deliver Chaplaincy Services through the engagement of a Pastoral Care Worker.
- SMG works collaboratively with these partners in the recruitment, supervision and ongoing professional development of PCW's to ensure the placement of high quality workers who are well equipped to support young people and strengthen communities.
- Pastoral Care Workers are funded from two main sources - the National School Chaplaincy Program and the local church communities.
- The Chaplaincy Service provided through your PCW is a voluntary program offered to school communities.



www.smg.asn.au



young people and school communities
discovering purpose, value and hope

CHRISTIES BEACH PRIMARY SCHOOL

OUR PASTORAL CARE WORKER

A Chaplaincy Service provided by
Schools Ministry Group (SMG)

